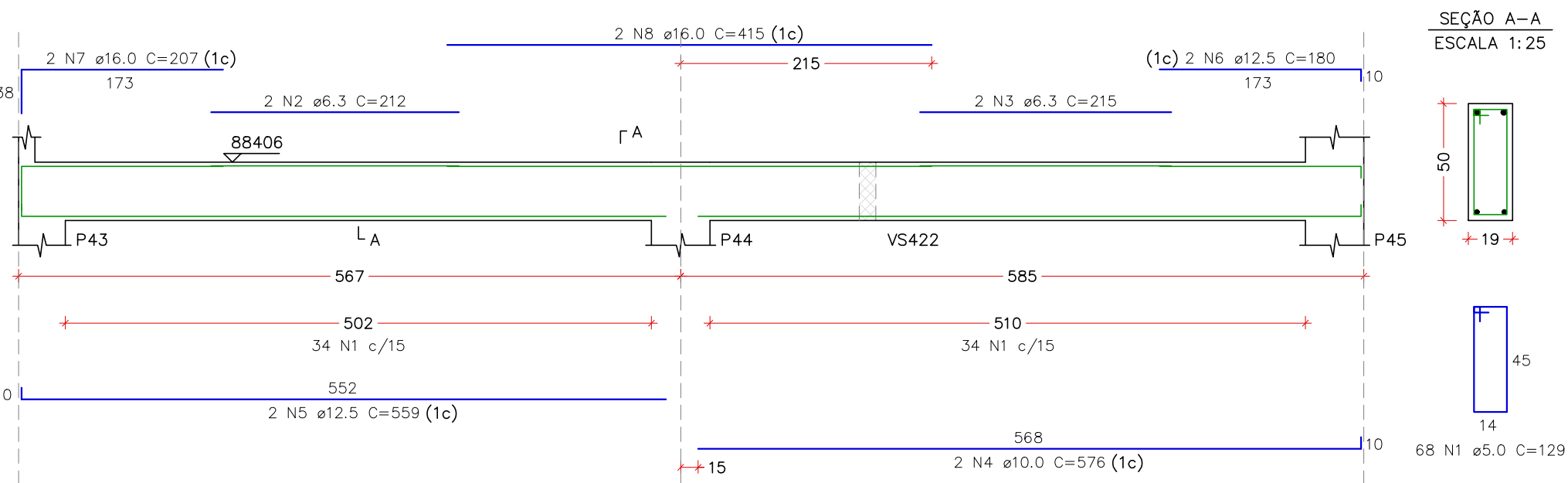
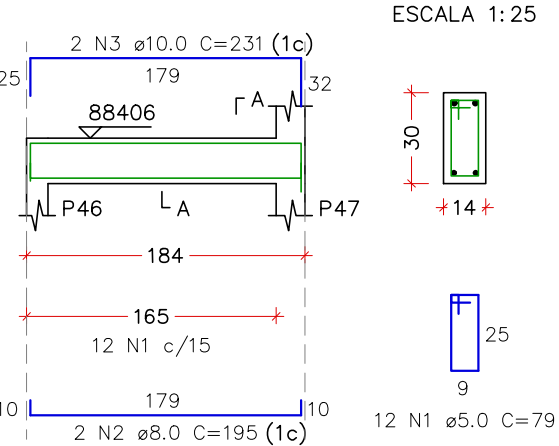


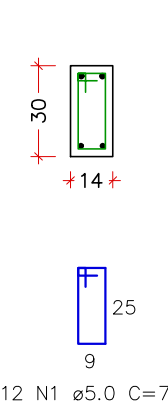
VS412
ESCALA 1:50



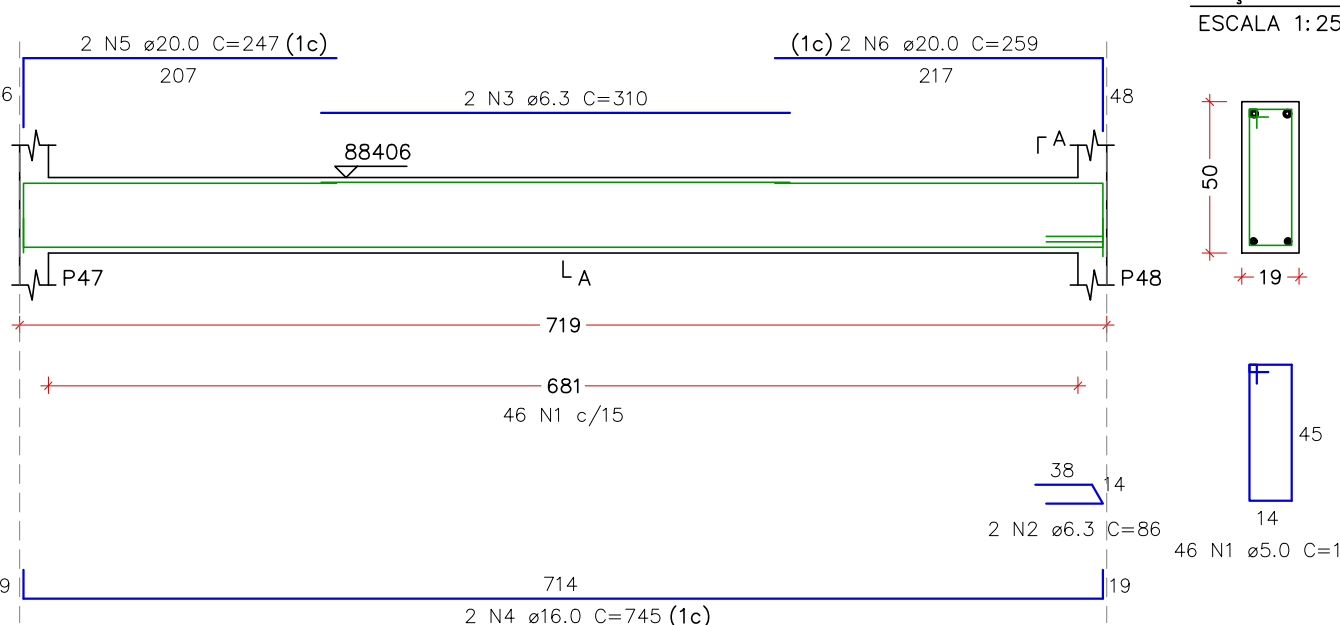
VS413
ESCALA 1:50



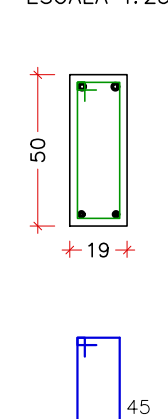
SEÇÃO A-A
ESCALA 1:25



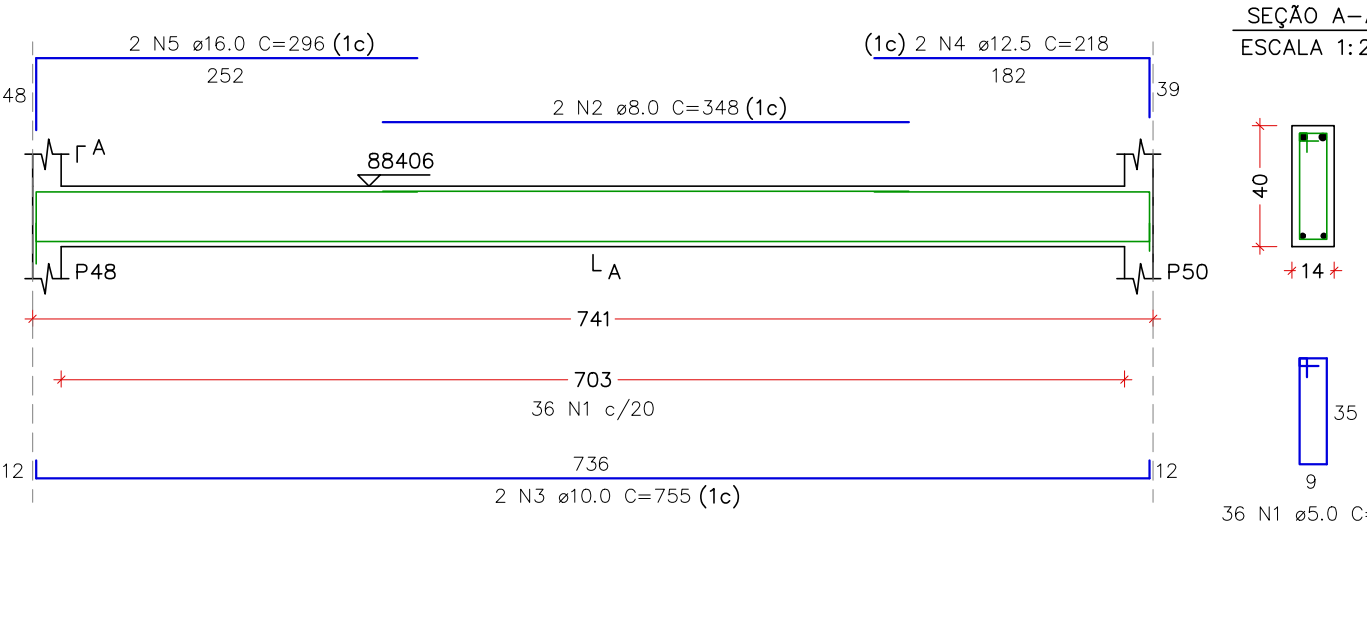
VS414
ESCALA 1:50



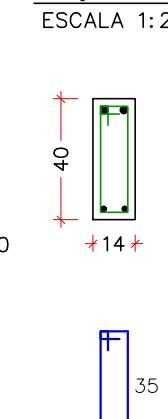
SEÇÃO A-A
ESCALA 1:25



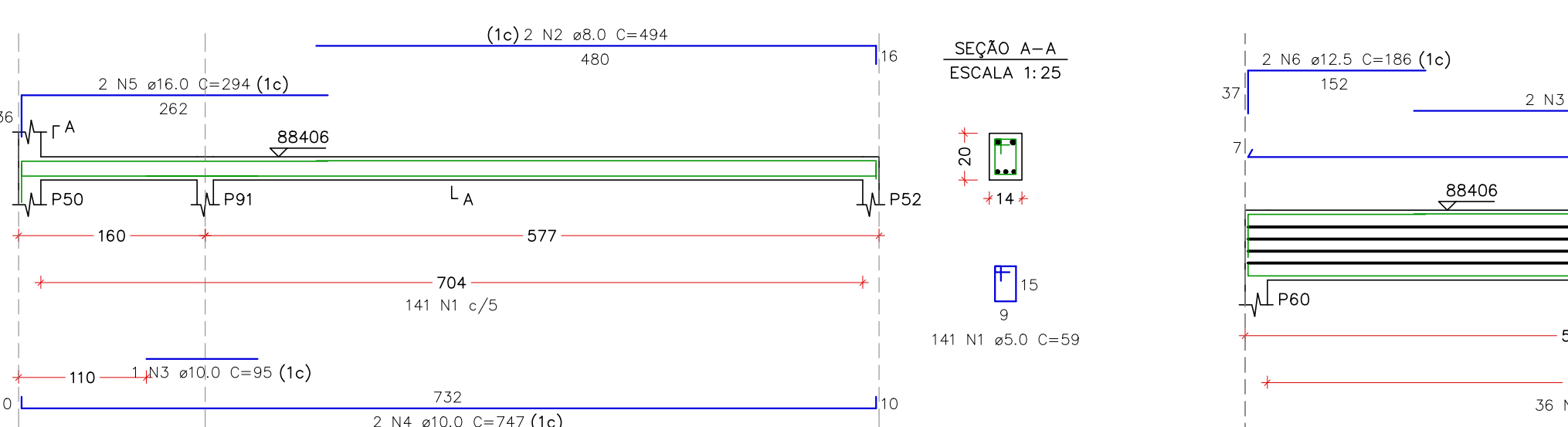
VS415
ESCALA 1:50



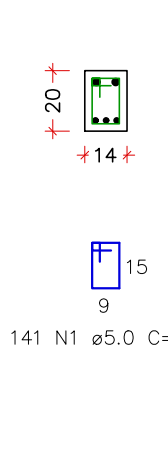
SEÇÃO A-A
ESCALA 1:25



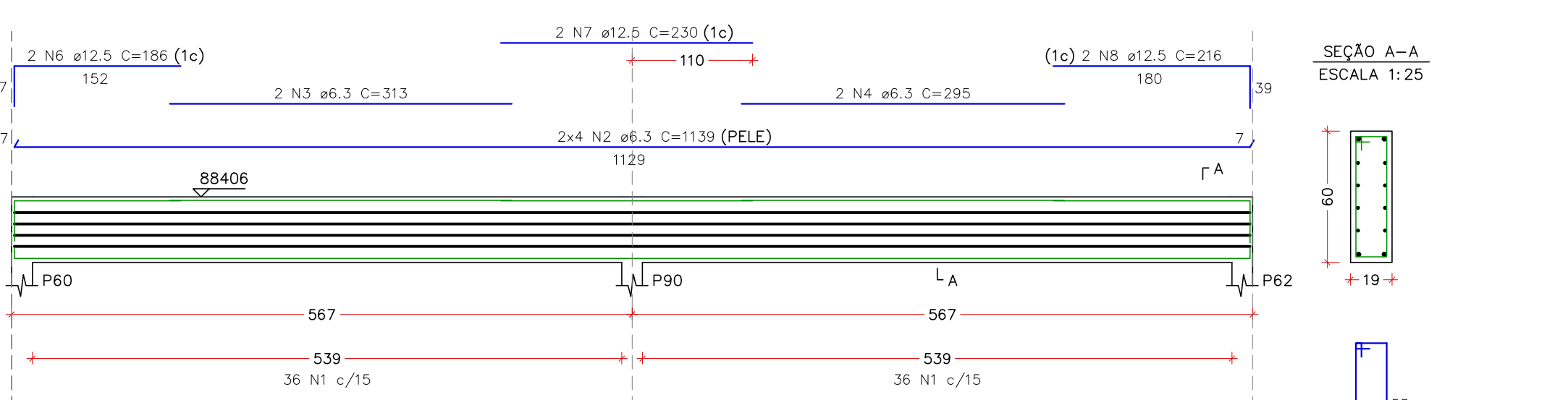
VS416
ESCALA 1:50



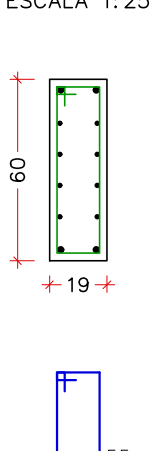
SEÇÃO A-A
ESCALA 1:25



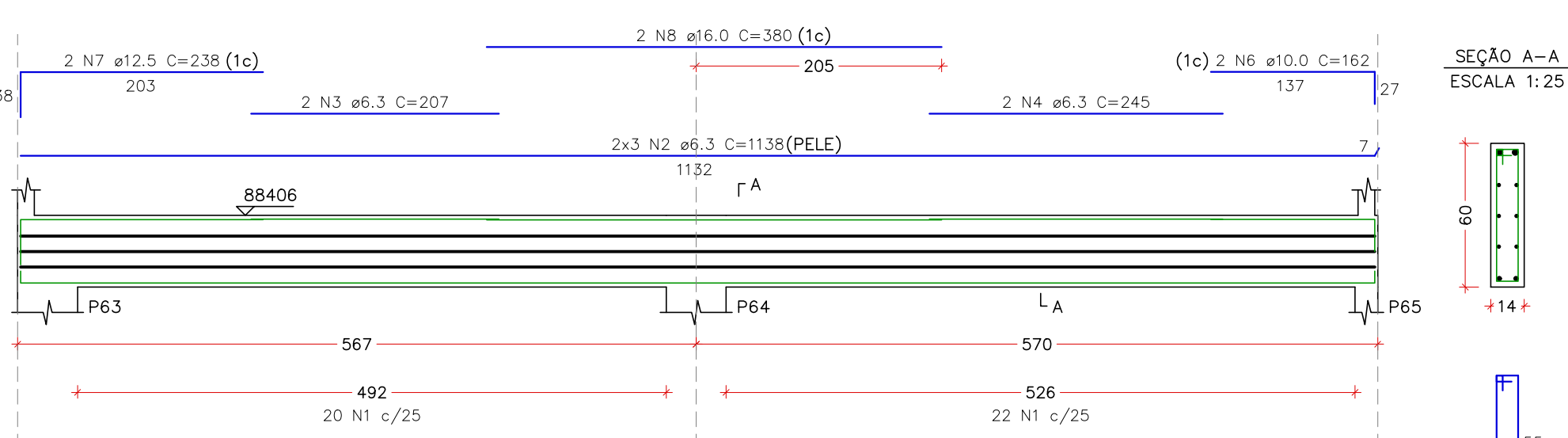
VS417
ESCALA 1:50



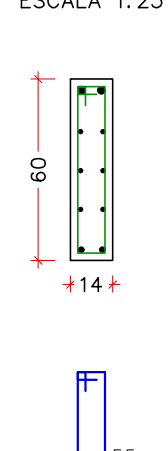
SEÇÃO A-A
ESCALA 1:25



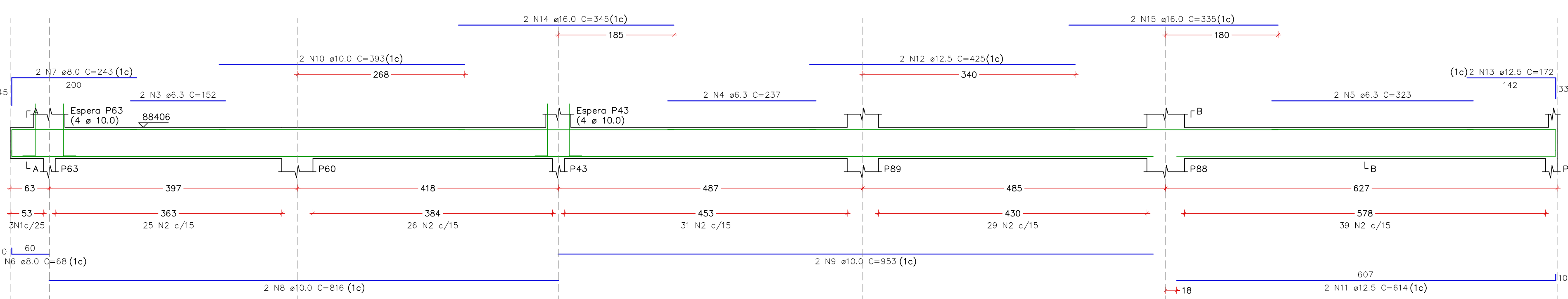
VS418
ESCALA 1:50



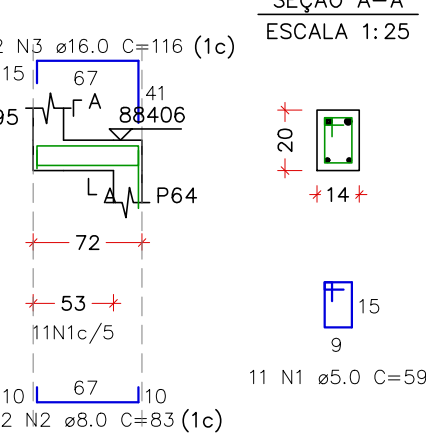
SEÇÃO A-A
ESCALA 1:25



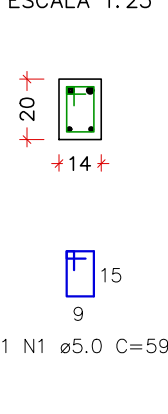
VS419
ESCALA 1:50



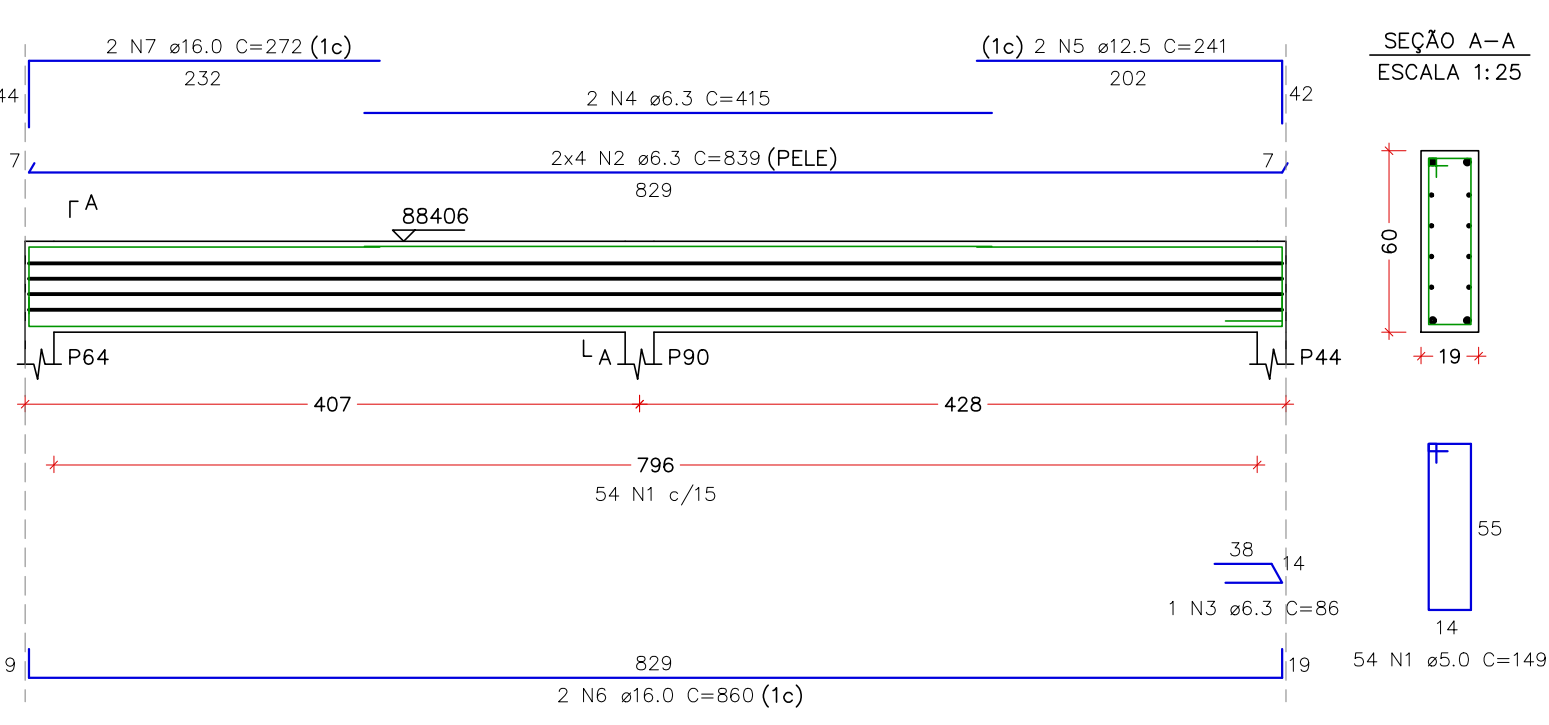
VS420
ESCALA 1:50



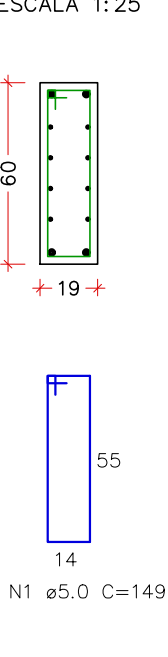
SEÇÃO A-A
ESCALA 1:25



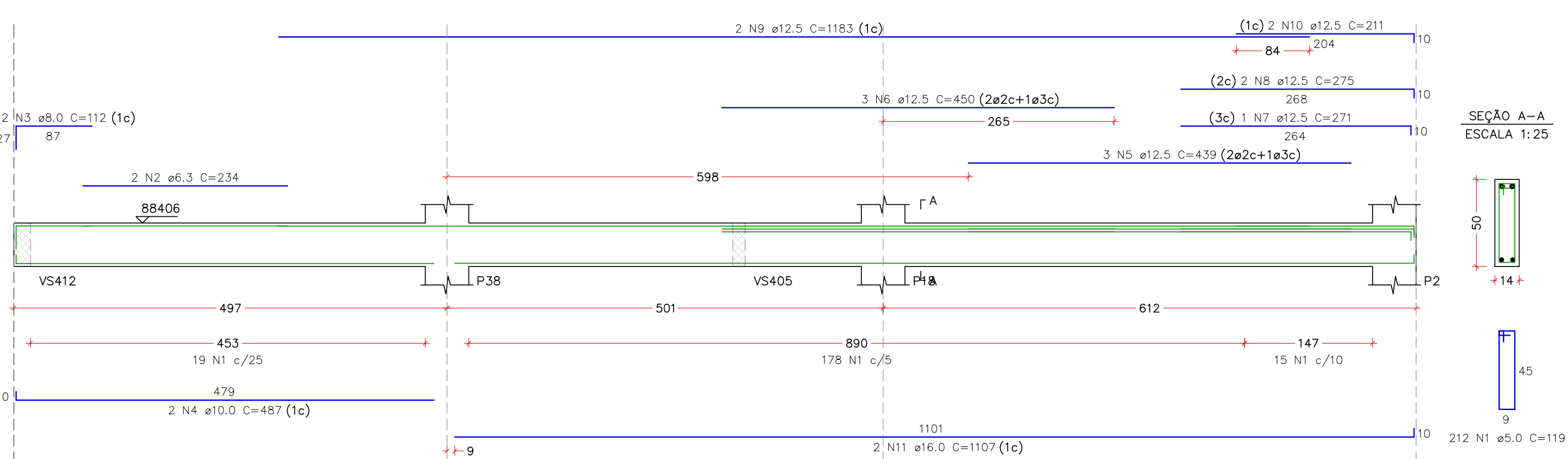
VS421
ESCALA 1:50



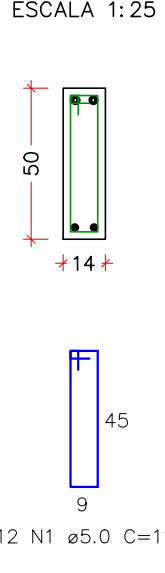
SEÇÃO A-A
ESCALA 1:25



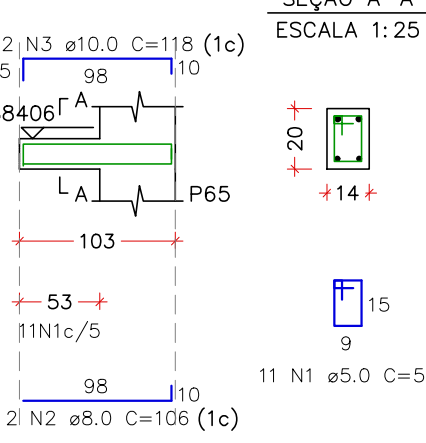
VS422
ESCALA 1:50



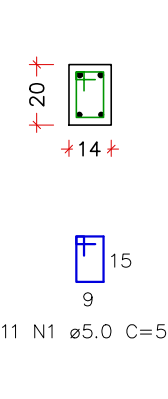
SEÇÃO A-A
ESCALA 1:25



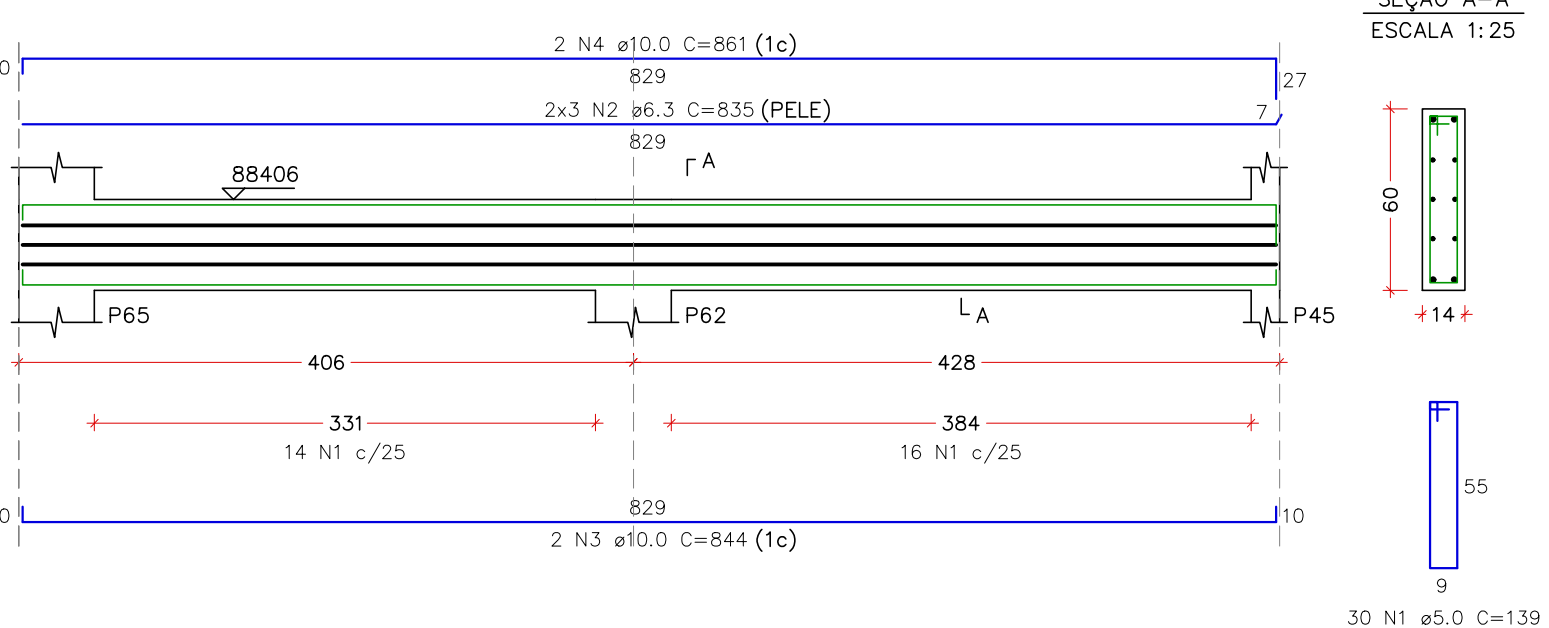
VS423
ESCALA 1:50



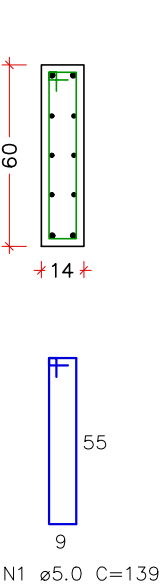
SEÇÃO A-A
ESCALA 1:25



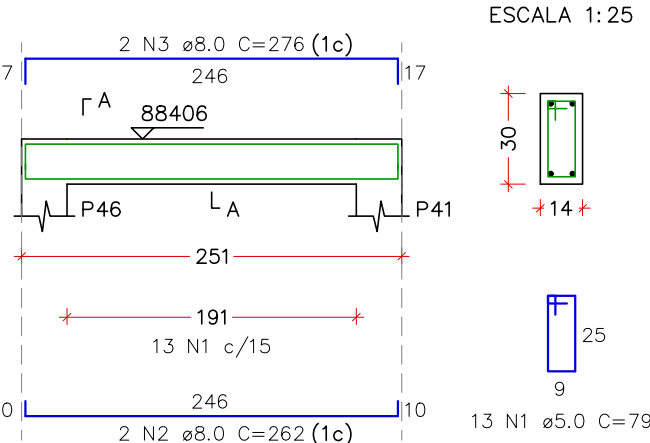
VS424
ESCALA 1:50



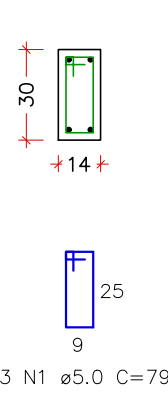
SEÇÃO A-A
ESCALA 1:25



VS425
ESCALA 1:50



SEÇÃO A-A
ESCALA 1:25



RELAÇÃO DO AÇO – PAV. SUPERIOR 4									
ELEMENTO	AÇO	N	DIAM (mm)	QUANT	C.UNIT (cm)	C.TOTAL (cm)			
VS412	CA60	1	5.0	68	129	8772			
	CA50	2	6.3	2	212	424			
	CA50	3	6.3	2	215	430			
	CA50	4	10.0	2	576	1152			
	CA50	5	12.5	2	559	1118			
VS413	CA50	6	12.5	2	560	1120			
	CA50	7	16.0	2	207	414			
	CA50	8	16.0	2	415	830			
	CA60	1	5.0	12	79	948			
	CA50	2	6.3	2	129	258			
VS414	CA50	3	10.0	2	231	462			
	CA50	4	10.0	2	247	494			
	CA50	5	12.5	2	245	490			
	CA50	6	12.5	2	245	490			
	CA50	7	16.0	2	245	490			
VS415	CA60	1	5.0	36	99	3564			
	CA50	2	6.3	2	247	494			
	CA50	3	10.0	2	245	490			
	CA50	4	12.5	2	215	430			
	CA50	5	16.0	2	296	592			
VS416	CA60	1	5.0	141	598	8421			
	CA50	2	8.0	2	494	988			
	CA50	3	10.0	2	294	588			
	CA50	4	10.0	2	247	494			
	CA50	5	16.0	2	294	588			
VS417	CA50	6	10.0	2	247	494			
	CA50	7	16.0	2	245	490			
	CA50	8	16.0	2	245	490			
	CA50	9	16.0	2	245	490			
	CA50	10	16.0	2	245	490			
VS418	CA50	11	16.0	2	245	490			
	CA50	12	16.0	2	245	490			
	CA50	13	16.0	2	245	490			
	CA50	14	16.0	2	245	490			
	CA50	15	16.0	2	245	490			
VS419	CA50	16	16.0	2	245	490			
	CA50	17	16.0	2	245	490			
	CA50	18	16.0	2	245	490			
	CA50	19	16.0	2	245	490			
	CA50	20	16.0	2	245	490			
VS420	CA50	21	16.0	2	245	490			
	CA50	22	16.0	2	245	490			
	CA50	23	16.0	2	245	490			
	CA50	24	16.0	2	245	490			
	CA50	25	16.0	2	245	490			
VS421	CA50	26	16.0	2	245	490			
	CA50	27	16.0	2	245	490			
	CA50	28	16.0	2	245	490			
	CA50	29	16.0	2	245	490			
	CA50	30	16.0	2	245	490			
VS422	CA50	31	16.0	2	245	490			
	CA50	32	16.0	2	245	490			
	CA50	33	16.0	2	245	490			
	CA50	34	16.0	2	245	490			
	CA50	35	16.0	2	245	490			
VS423	CA50	36	16.0	2	245	490			
	CA50	37	16.0	2	245	490			
	CA50	38	16.0	2	245	490			
	CA50	39	16.0	2	245	490			
	CA50	40	16.0	2	245	490			
VS424	CA50	41	16.0	2	245	490			
	CA50	42	16.0	2	245	490			
	CA50	43	16.0	2	245	490			
	CA50	44	16.0	2	245	490			
	CA50	45	16.0	2	245	490			
VS425	CA50	46	16.0	2	245	490			
	CA50	47	16.0	2	245	490			
	CA50	48	16.0	2	245	490			
	CA50	49	16.0	2	245	490			
	CA50	50	16.0	2	245	490			

RESUMO DO AÇO			
AÇO	DIAM (mm)	C.TOTAL (m)	PESO 4 100% (kg)
CA50	6.3	342.4	92.2
CA50	8.0	43.7	19
CA50	10.0	162.8	110.4
CA50	12.5	151.2	160.2
CA50	16.0	107.4	186.5
CA50	20.0	10.1	27.5
CA60	5.0	1035.8	175.6
PESO TOTAL (kg)			
CA50	595.7		
CA60	175.6		

VOLUME DE CONCRETO (C-30) = 9.09 m³
ÁREA DE FORMA = 105.31 m²

REV. 03	31/03/25	REVISÃO DE PROJETO CONFORME ANÁLISE SOLICITADA	DAC		
REV. 02	24/02/25	REVISÃO DE PROJETO CONFORME ANÁLISE SOLICITADA	DAC		
REV. 01	30/10/24	REVISÃO DE PROJETO COMPLETO	DAC		
REV. 00	02/02/24	EMISSIONAL INICIAL	DAC		
REVISÃO DATA : DESCRIÇÃO:			RESP.:		
CLIENTE					
		Prefeitura Municipal de Pouso Alegre			
PROJETO		COORDENAÇÃO			
		ALCÍDIO CAETANO FERREIRA CREA: MG-97.132/D			
Rua Cel. Joaquim Francisco, 341, Bairro Virgínia CEP: 37501-052 - Itajubá / MG Tel: (35) 2143 - 9087 www.dacengenharia.com.br		RESPONSÁVEL TÉCNICO E AUTOR RAFAEL BARBOSA CARREIRA CAU: 00A155411-5			
EMPENHAMENTO					
CONSTRUÇÃO DA ESCOLA MUNICIPAL ALEGRINHO					
ENGENHEIRO		DISCIPLINA			
RUA LOURDES DE SOUZA SANTOS, COLINA VERDE POUSO ALEGRE – MINAS GERAIS		ESTRUTURAL			